

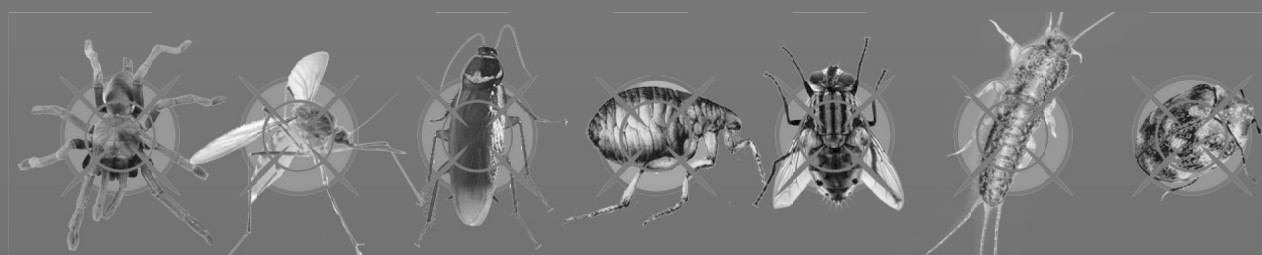
CAUTION

**KEEP OUT OF REACH OF CHILDREN
READ SAFETY DIRECTIONS BEFORE OPENING OR USING**

Protect-us
ARRAY™
INSECTICIDE

ACTIVE CONSTITUENT: 10 g/L DELTAMETHRIN

GROUP 3A INSECTICIDE



**For control of a range of insect pests in
various situations as per the Directions
for Use table.**

PROTECT-US AUSTRALIA PTY LTD

ACN 156 662 216

Unit 3, 2 Duck Street

Auburn NSW 2144

www.protect-us.com.au

CUSTOMER SERVICE

1800 420 144

EMERGENCY RESPONSE (ALL HOURS) 1800 420 144

™ Trademark of Protect-us.

APVMA Approval No. 67037/101414

DIRECTIONS FOR USE

RESTRAINT: DO NOT apply spray treatment outdoors if rain is imminent.

SITUATION	PEST	RATE	CRITICAL COMMENTS
Domestic, commercial, industrial, and public buildings: including food processing establishments, shops, factories, ships, offices, schools, storerooms, hospitals, barracks, private houses and external areas associated with such establishments.		Initial treatment 150 mL	For use on non-porous surfaces: dilute with 5 L of water and apply as a coarse spray at a rate of 5 L of emulsion per 100 m² not exceeding the point of run-off.
		Maintenance treatments 75 mL	For use on porous surfaces or for use through power equipment, dilute with 10 L of water and apply per 100 m² of surface, not exceeding the point of run-off.
	Cockroaches		Conduct a thorough inspection and apply to known and potential cockroach harbourages. A barrier application around areas where cockroach infestations may be originating is also suggested. Where application of a spray is not suitable it is recommended that a suitably registered gel bait be applied.
	Web-spinning spiders		Directly spray spiders, their webbing and areas where spiders may hide. It is recommended that webbing be left in place for a few days after application to optimise efficacy.
	Non web-spinning spiders		Spray areas where spiders are known to occur.
	Ants		Where possible locate the nest and spray directly into nest entrances. Penetration of insecticide can be assisted by pre-wetting sandy and porous soils with water. A thorough soaking treatment with insecticide mixture is required to destroy the nest. If nest cannot be located then spray infested areas.
	Fleas		Clean and vacuum infested areas and dispose of dust collected in the garbage in a sealed plastic bag. Lightly spray infested areas concentrating on areas under furniture etc. Treat pets with a suitably registered veterinary flea control product. See also the note on application to carpets below.
	Silverfish		Direct spray to areas of potential infestation eg under skirting boards, and furniture where dark conditions may favour silverfish populations.
	Bed bugs		Treat cracks and crevices in bed frames and the adjacent walls.
	Bird mites		Treat infested areas. Inspect roof voids and remove any old bird nest material. A suitably registered dust product is recommended for treatment of roof void areas.
	Carpet beetles		Apply to infested carpets, particularly in areas of little or no traffic, and underneath windows where adult beetles may be entering the building. See also the note on application to carpets below.
	Clothes moths		Spray surfaces in areas where clothes are stored. DO NOT spray the clothes.
	Houseflies, mosquitoes		Spray surfaces where flies and mosquitoes are known to rest. Flies- include external surfaces that are exposed to the morning sun. Mosquitoes- spray walls, awnings, fences and vegetated areas near to buildings. Note: A residual surface spray will only control those insects that alight on the treated surfaces.
	Stored product insect pests		The use of this product in the control of stored product pests should be considered as part of an integrated strategy to prevent development of insect populations. Best results will be obtained where good hygiene is maintained. Infested areas should be cleaned prior to application and regularly cleaned thereafter to reduce food sources for pests. When treating for beetle pests pay special attention to sheltered areas such as cracks and crevices, under furniture and equipment, floors, walls and shelves. Adult moths can be controlled by applying the product to walls and surfaces where the flying adult moths come to rest.
Cut flowers for export	Quarantine pests	250 mL per 100 L water	Flowers must be totally submerged in the diluted product for not less than 1 minute and then left to dry naturally for 2 hours.
For short term protection of freshly felled pine logs prior to debarking	Fivespined bark beetle (<i>Ips grandicollis</i>)	100 mL in 10 L water	Apply through knapsack or power sprayer at the rate of 10 L per 100 m² of surface area. NB. For best results apply promptly after felling or sawing operations.
For short term protection of freshly felled logs, poles and posts, and sawn timber including in situ timbers.	Furniture Beetles, <i>F. Anobiidae</i> , Auger beetles, <i>F. Bostrichidae</i> ; Powderpost beetles, <i>F. Lyctinae</i> .		Apply through knapsack or power sprayer at the rate of 10 L per 100 m² of surface area. NB. For best results apply promptly after felling or sawing operations.

NOT TO BE USED FOR ANY PURPOSE, OR IN ANY MANNER, CONTRARY TO THIS LABEL UNLESS AUTHORISED UNDER APPROPRIATE LEGISLATION.

GENERAL INSTRUCTIONS

Insecticide Resistance Warning



Some naturally-occurring insect biotypes resistant to Protect-us ARRAY Insecticide and other Group 3A insecticides may exist through normal genetic variability in any insect population. The resistant individuals can eventually dominate the insect population if Protect-us ARRAY Insecticide or other Group 3A insecticides are used repeatedly. The effectiveness of Protect-us ARRAY Insecticide on resistant individuals could be significantly reduced. Since occurrence of resistant individuals is difficult to detect prior to use, Protect-us Australia Pty Ltd accepts no liability for any losses that may result from the failure of Protect-us ARRAY Insecticide to control resistant insects.

Protect-us ARRAY Insecticide may be subject to specific resistance management strategies. For further information contact your local supplier, Protect-us Australia Pty Ltd representative or local agricultural department agronomist.

Mixing/Application

Shake original container before use. Periodically agitate suspension during application to ensure thorough mixing. For best results form a premix of the required amount of product with an equal volume of water. Stir thoroughly. Add to spray tank and dilute with remaining amount of water. Agitate thoroughly. Do not store diluted insecticide. Prepare a fresh solution as necessary. Do not spray the moving parts of any machinery, electric motors or switch gear with the water based product.

Note on application to carpets:

Whilst carpets are regarded as porous surfaces, excessive liquid application may produce water stains and therefore the non-porous surface rate should be adopted if possible.

Short pile carpet: Dilute recommended amount of product in 5 L water and apply 5 L per 100 m² of carpet.

Long or shag pile carpet: Dilute recommended amount of product in 10 L water and apply 10 L per 100 m² to ensure effective penetration of carpet pile.

Since carpets vary in thickness, colour and fibre type, it is recommended that a small, inconspicuous area of carpet be treated and allowed to dry to test for colourfastness.

USE AS A RESIDUAL SURFACE TREATMENT FOR CONTROL OF STORED PRODUCT PESTS:

The following measures should be observed:

- Ensure food items in store are not exposed to spray- if necessary remove food items from the area to be treated. Allow all treated surfaces to dry before replacing food items – where possible avoid spraying actual surfaces which food is likely to directly contact.
- Do NOT allow spray to contact food packaging material.
- Discard any foodstuff accidentally contaminated with spray solution.

PRECAUTIONS

Avoid contact with food, food utensils or places where food is prepared or stored. Before use, remove or cover all exposed foodstuffs. Cover all dishes and utensils, and places where food is prepared or stored. After use, thoroughly ventilate treated area. Clean up thoroughly before processing/ serving resumes.

For surface treatment only- do not spray into the atmosphere using foggers or other devices designed to create an aerosol. Allow treated carpets to dry before resuming activity on them.

PROTECTION OF WILDLIFE, FISH, CRUSTACEANS AND ENVIRONMENT:

Dangerous to fish. DO NOT contaminate streams, rivers or waterways with the chemical or used containers.

STORAGE AND DISPOSAL:

Store in the closed, original container in a cool, well-ventilated area. Do NOT store for prolonged periods in direct sunlight. Triple or (preferably) pressure rinse containers before disposal. Add rinsings to the spray tank. Do not dispose of undiluted chemicals on site. If recycling, replace cap and return clean containers to recycler or designated collection point. If not recycling, break, crush or puncture and deliver empty packaging to an approved waste management facility. If an approved waste management facility is not available bury the empty packaging 500 mm below the surface in a disposal pit specifically marked and set up for this purpose clear of waterways, desirable vegetation and tree roots in compliance with relevant Local, State or Territory government regulations. Do not burn empty containers or product.

SAFETY DIRECTIONS:

Harmful if swallowed. Facial skin contact may cause temporary facial numbness. Will irritate the eyes, nose and skin. Avoid contact with eyes and skin. Do not inhale spray mist. When opening the container and preparing spray and using the prepared spray wear cotton overalls buttoned to the neck and wrist, washable hat, elbow-length PVC gloves and face shield. If product on skin, immediately wash area with soap and water. After use and before eating, drinking or smoking, wash hands, arms and face thoroughly with soap and water. After each day's use, wash gloves, face shield and contaminated clothing.

FIRST AID:

If poisoning occurs, contact a doctor or Poisons Information Centre. Phone Australia 13 11 26.

SDS:

Additional information is listed in the Safety Data Sheet which is available from Protect-us on request. Call Customer Service 1800 420 144 or visit our web site at www.protect-us.com.au.

NOTICE

Protect-us warrants that this product conforms to its chemical description and is reasonably fit for the purposes stated on the label when used in accordance with Directions for Use under normal conditions of use. No warranty of merchantability or fitness for a particular purpose, express or implied, extends to the use of the product contrary to label instructions or under off-label permits not endorsed by Protect-us, or under abnormal conditions.