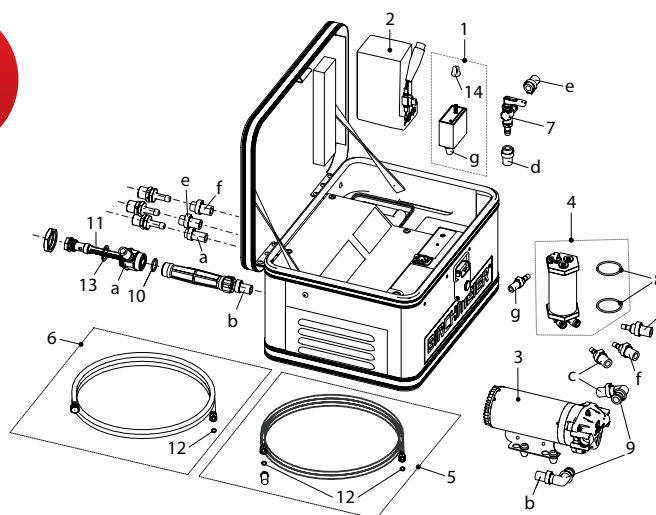




BM 1035



BM 1035 Pump station (battery Li-Ion 25.2 V), incl. battery charger (230 V) *

12026101

210803

Accessories (Pictures see page 66 ff)

Vario Gun, stepless variable one-hand operation from mist to jet

11558501

100821

Trigger Gun Media for all applications

10368301-SB

200040

Trigger, made of brass with plastic handle, G1/2" thread

10504010-SB

100531

Swivel joint, keeps hose from twisting

10397901-SB

700502

Spray tube 60 cm, without adjust. connect., G1/4" e on both sides

28556603

700250

Double nozzle holder SW, thread G1/4"

12006401

031798

Duro-nozzle complete 1.5 mm

28502324-SB

100166

Fanjet nozzle complete TeeJet 8002 brass

11612810

110561

XL 8 S Telescopic lance 7 m / working height 8 m (Spray-Version)

11935801

113982

No Repair set consisting of:

12008301

720234

8 O-ring 40.95x2.62

9 Connector angled 90°, ø10 mm for pump 24 V / 10 bar

10 Gasket 24x19x2

No Gasket set consisting of:

12024301

720647

11 Filter

12 Gasket 17x11x1.5

13 Gasket 28x21x1.5

Hose set consisting of:

12031601

720760

a Hose ø12x17.8, PVC transparent, L = 0.35 m

b Hose ø12x17.8, PVC transparent, L = 0.5 m

c Hose ø10x17, PVC black, L = 0.14 m

d Hose ø10x17, PVC black, L = 0.35 m

e Hose ø10x17, PVC black, L = 0.4 m

f Hose ø10x17, PVC black, L = 0.35 m

g Hose ø6x12, oil resistant, L = 0.35 m

Gesamter Inhalt siehe www.birchmeier.com

No Spare parts

1 Electronics complete

12007801

720180

2 Li-ion battery 24 V / 8.7 Ah

12009001

720166

3 Pump and motor complete

12007901

720197

4 Air vessel complete

12008001

720203

5 Suction tube complete

12031401

720746

6 Return hose complete

12031501

720753

7 Mixing valve complete

12008101

720210

12 Gasket 17x11x1.5; 10 pcs per pack

11950101

400211

14 Potentiometer knob, **minimum order qty. 5 pcs**

11922701

720883

Charger 100-240 V, 25.2 V / 3 A

11997001

720173

A 130 / A 75 (Honda and electric motor) can be converted with BM 1035

* Different discount rate for large units